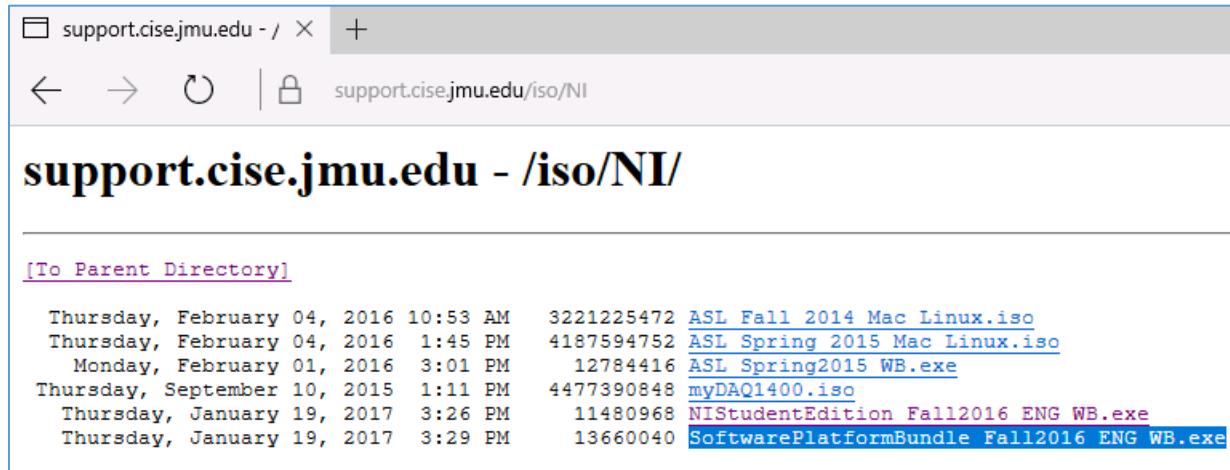


NI LabView 2016 Installation Instructions

Personal Computers and Off-Campus Installations

Go to <https://support.cise.jmu.edu/iso/NI> and log in with your JMU eID and password.

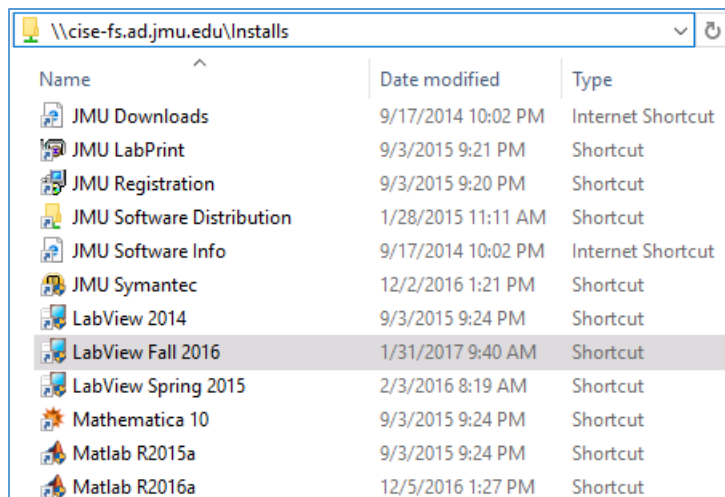


Windows users will need to download and run the Web Installer:

[SoftwarePlatformBundle Fall2016 ENG WB.exe](#). This small application will allow you to install LabView from the internet.

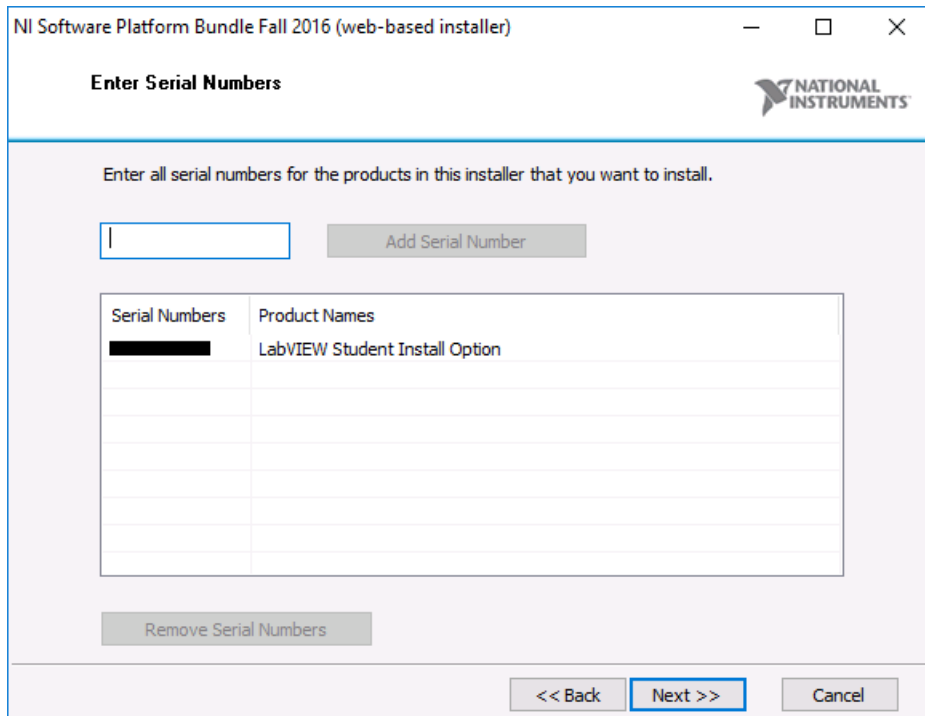
JMU-Owned PCs on the JMU Network

Go to <\\cise-fs.ad.jmu.edu\Installs> using Windows File Explorer. Midway down the page, you will find a listing for **LabView Fall 2016**:



Windows Installation Process

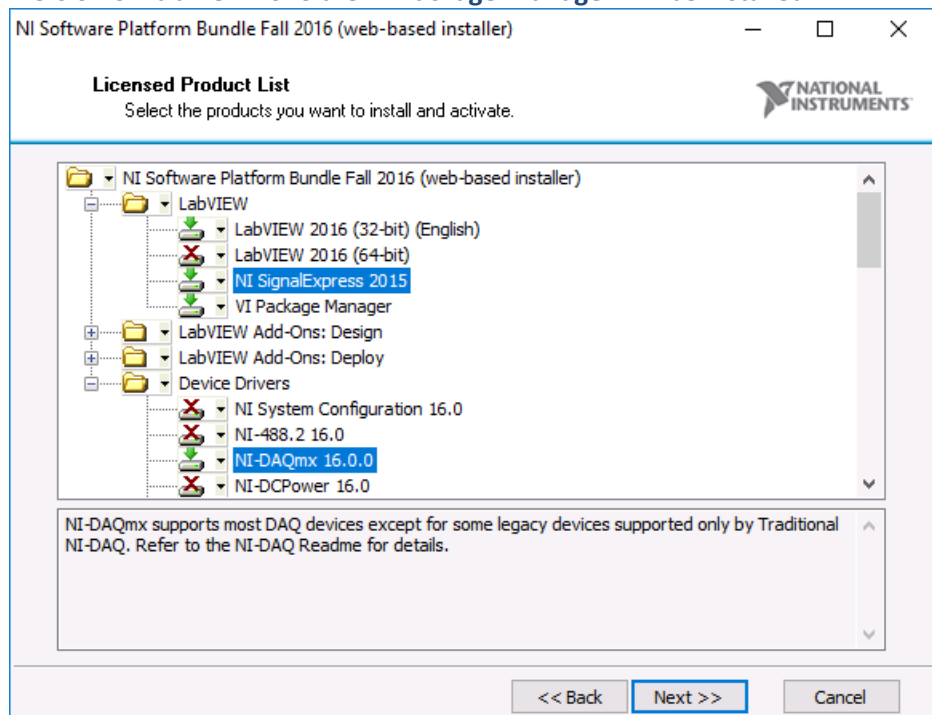
After starting the installation, enter the LabVIEW serial number provided by your instructor:



By default, only the English version of **LabVIEW 2016** the **VI Package Manager** will be installed.

You must also install **NI Signal Express 2015** and **NI DAQmx 16.0.0** (found under the Device Drivers section).

Additional packages may be installed as desired.



NI Software Platform Bundle Fall 2016 (web-based installer)

Activate Your Products
Complete the following information.

NATIONAL INSTRUMENTS

An NI User Account is required to activate our product. This enables NI to better deliver benefits associated with software maintenance and support programs.

Log in to your NI User Account

Email

Password

[Forgot your password?](#)
[Create a new Account](#)

I am not the end user. Defer activation until product launch

Following product selection, you will be required to log in to an NI User Account. If you have never created an NI account, please do so now by clicking "[Create a new Account](#)":

Provide your name, your Dukes email address, and JMU's postal address. You can now use your new account to activate LabView.

LabView, the VI Package Manager, SignalExpress, and DAQmx will require approximately 4.7GB to be downloaded. Selecting all installation options may require over 80GB. The download will take some time depending upon the selection.

After downloading, installation will take between 30 minutes and 3 hours depending upon the products you included.

Please be patient and allow the system to reboot when finished.

Product Activation

Create an NI User Account (or Log In)

Email Address

Password Confirm Password

First Name Last Name

Company Name

Address

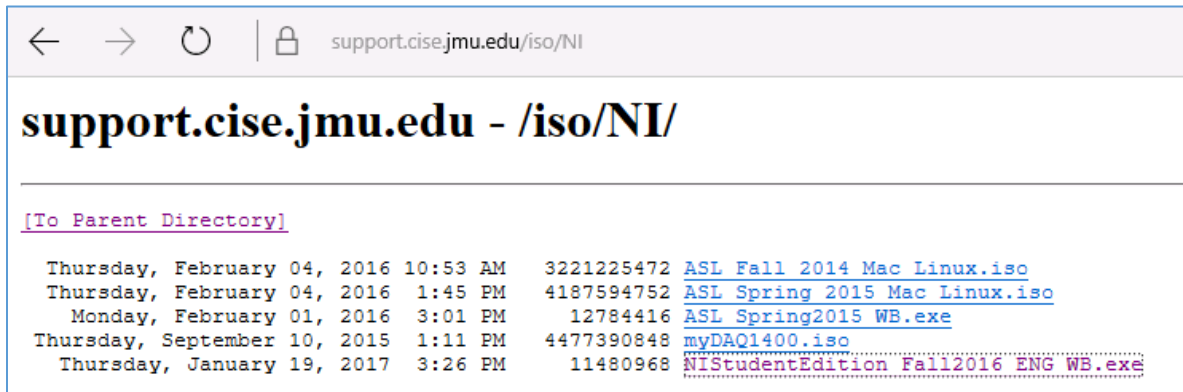
Mail Stop (optional) Department (optional)

City State Postal Code

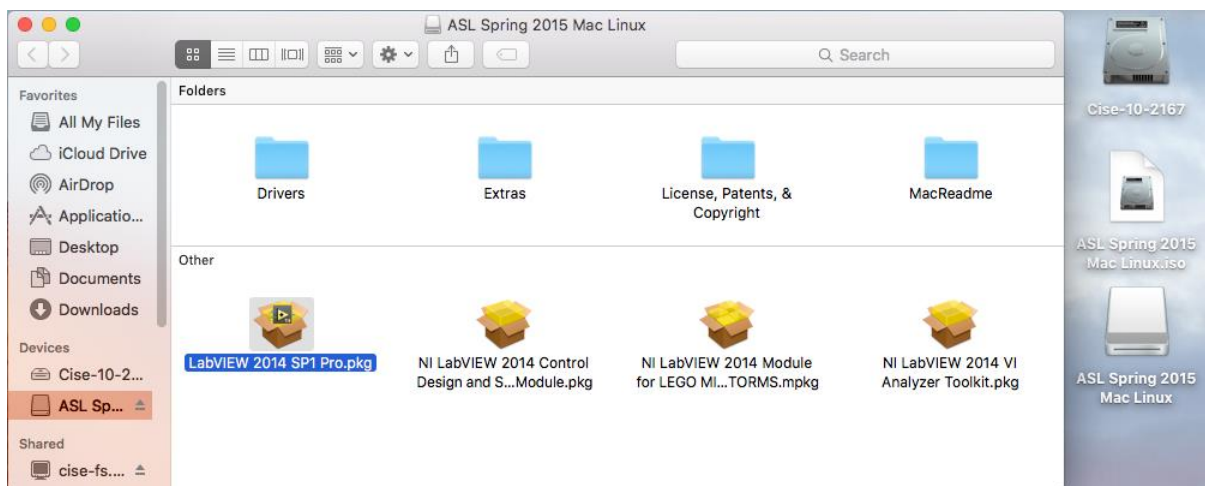
By clicking "Create Account" I agree to National Instruments' privacy policy.

Mac Installation Process

Go to <https://support.cise.jmu.edu/iso/NI> and log in with your JMU eID and password:



Download and the ISO installation media: [ASL Spring 2015 Mac Linux.iso](#). The ISO may be opened with Finder to show an installer on the desktop. Within are four packages: LabView, Control Design and Simulation Modules, Lego Mindstorms, and the Analyzer Toolkit.



These may be run individually, but are the only components of the site license for Mac.

Support

If you have any difficulty installing or licensing LabView, please email Cise-IT@jmu.edu for support. Thank you!

Chrissy Willow Rothgeb

Cise IT - Labs and Server Support

College of Integrated Science and Engineering | James Madison University

540.568.2629 | ISAT/CS 260 | 701 Carrier Drive, Harrisonburg VA 22807