

SolidWorks 2012 ISO Install

Installing SolidWorks 2012 via ISO Download

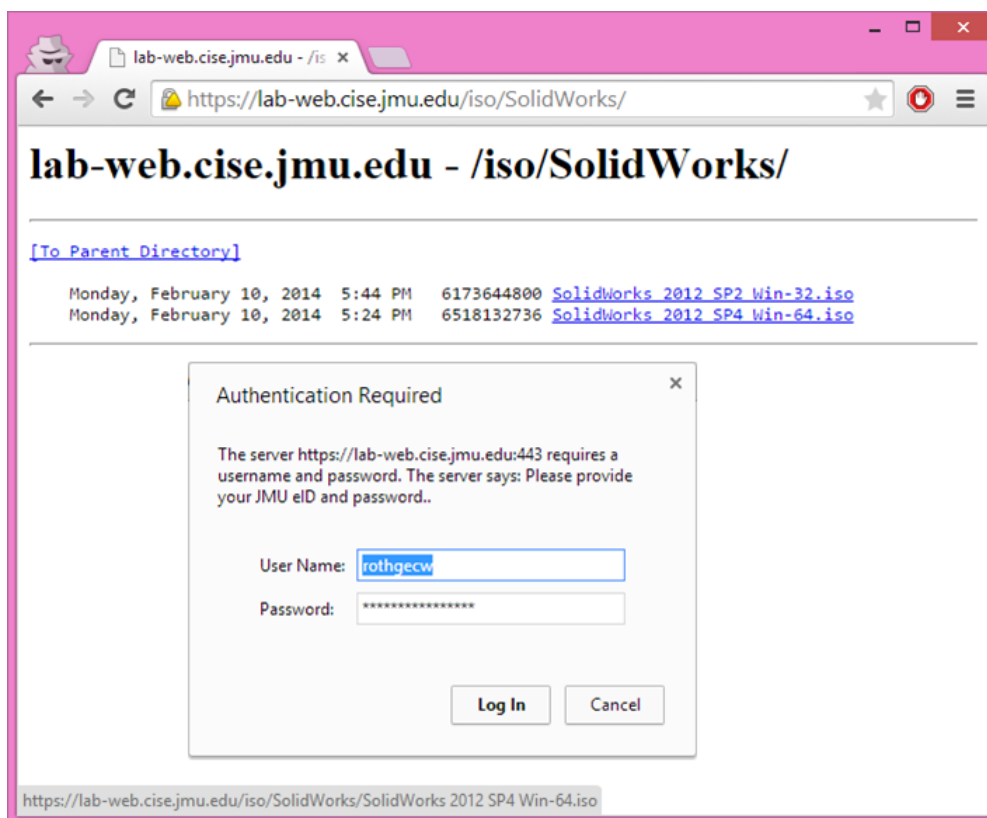
edited 2015.02.19

Forward

The JMU Engineering Department owns a limited site license for SolidWorks. As such, Engineering Faculty, Staff and Students are privy to the software for educational purposes only. Licensing is handled by a network license manager from which licenses may be used, or borrowed for longer periods of use. The installs for SolidWorks are available on the Engineering File Server. This document covers the process of connecting, installing and licensing SolidWorks.

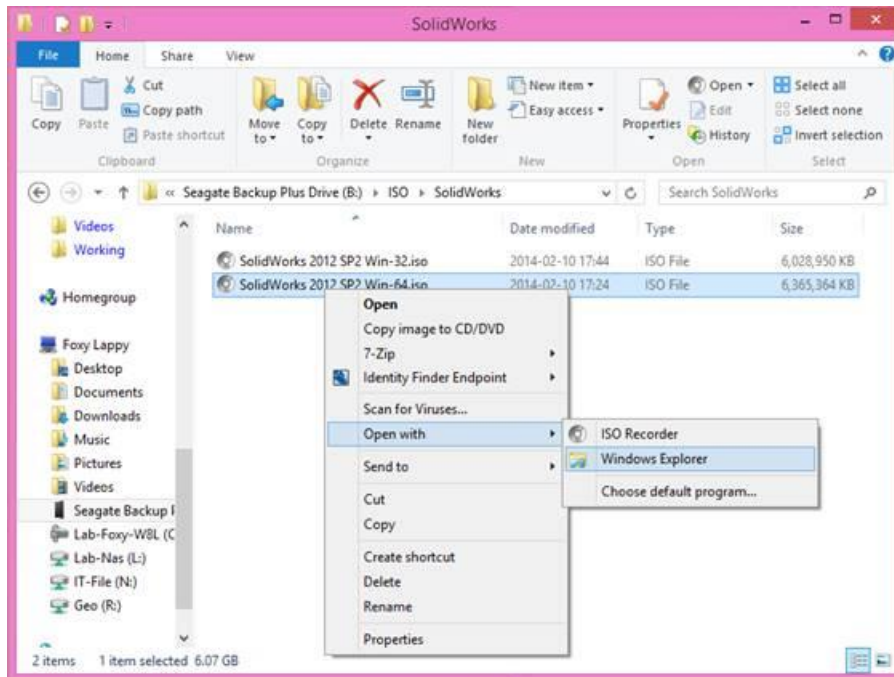
Downloading the SolidWorks 2012 ISO

Go to <https://lab-web.cise.jmu.edu/iso/SolidWorks/> and log in with your JMU eID and password. SolidWorks 2012 is available as in both 32 and 64-bit distributions – please choose the one that matches your system. If you are unsure which version of Windows you are running, Microsoft offers some help: <http://windows.microsoft.com/en-us/windows/32-bit-and-64-bit-windows#>.



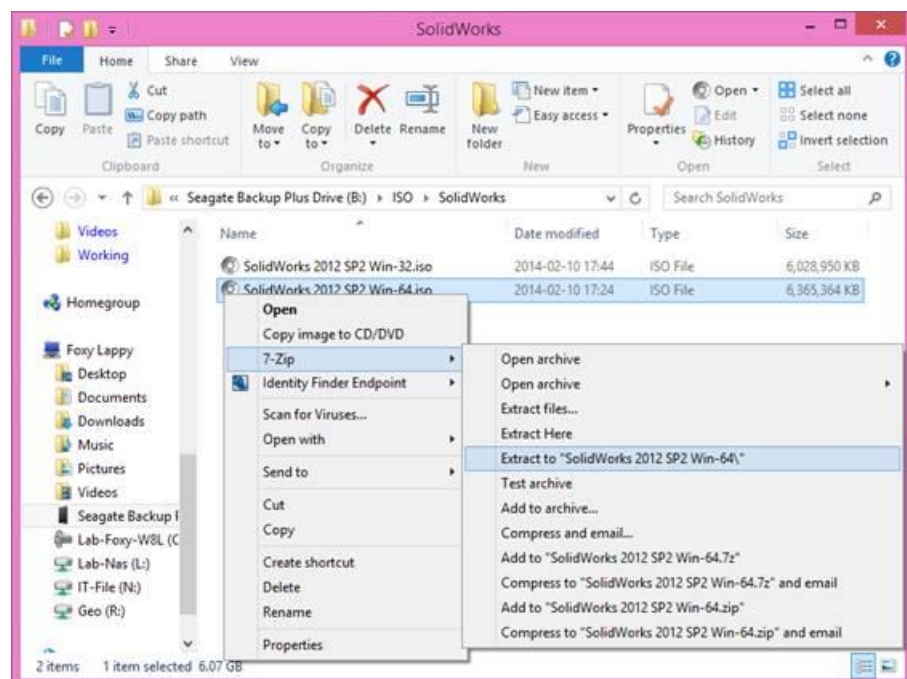
Opening or Extracting the SolidWorks 2012 ISO

An ISO is a digital representation of a CD or DVD stored as a file with the extension “.iso” appended to the filename. Windows 8 and above recognize an ISO and will allow you to open it directly through Explorer. If opening an ISO tries to go through any other CD/DVD-burning application, simply **right-click** the ISO, choose **Open with** from the pop-up menu, then select **Windows Explorer**:



If you do not have Windows 8, I recommend extracting the contents with 7-Zip, a powerful, light-weight and free compression tool you can download from <http://www.7-zip.org/download.html>.

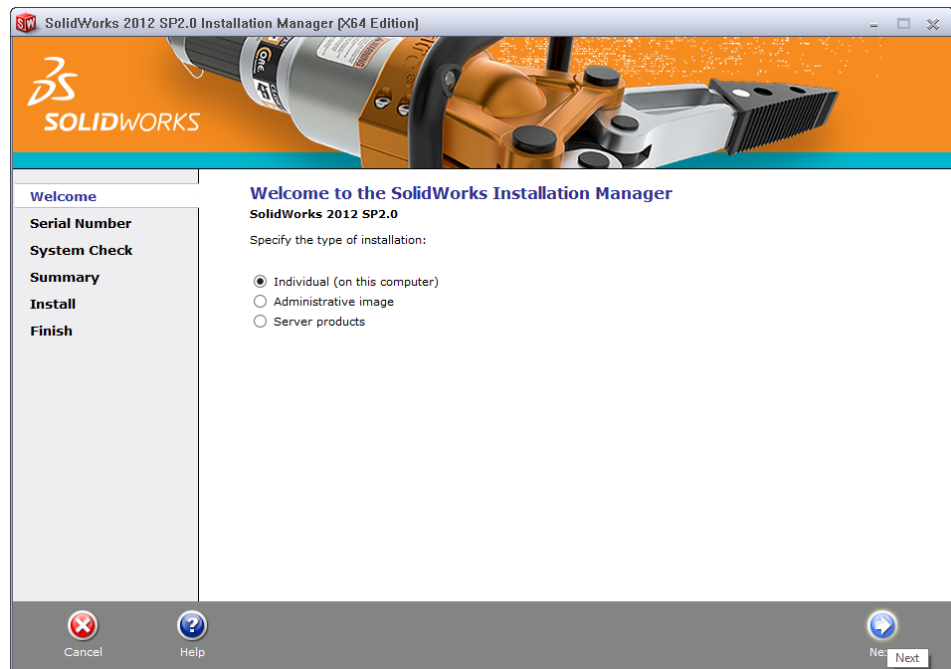
Once installed, **right-click** the ISO, choose **7-Zip** from the pop-up menu, then **Extract to “folder”**.



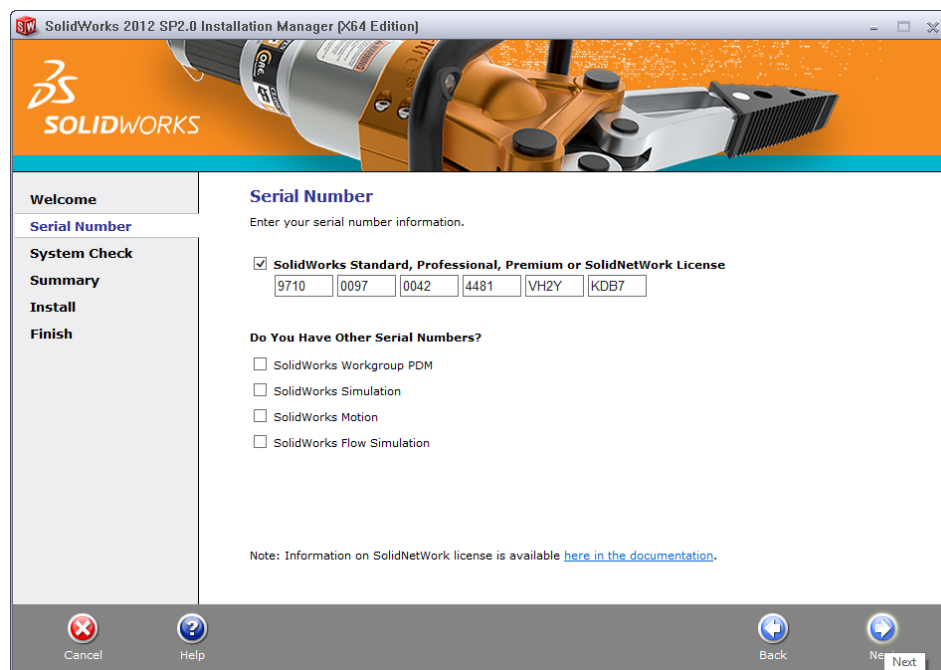
Installing SolidWorks 2012

Once you open or extract the ISO, you should find the **setup** program within. Simply double-click to start the SolidWorks Install.

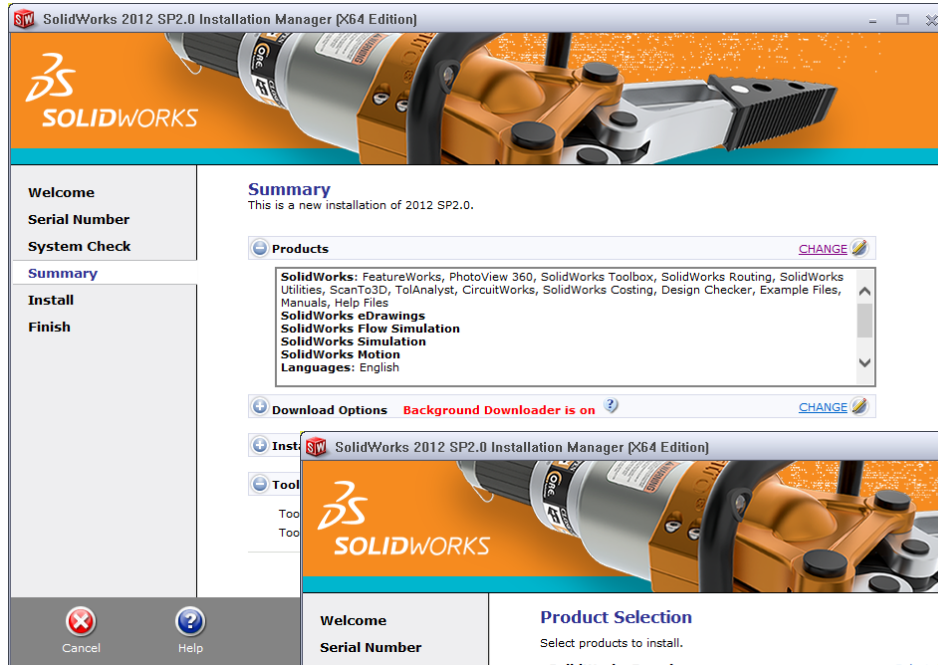
When prompted, choose an **Individual install**. If this option is greyed-out, you have tried to install the wrong version of SolidWorks for your processor type. Choose the other (64 or 32-bit) distribution of the ISO instead.



Next you will be required to provide the **serial number**. Enter “**9710-0097-0042-4481-VH2Y-KDB7**”, leaving the other boxes blank.



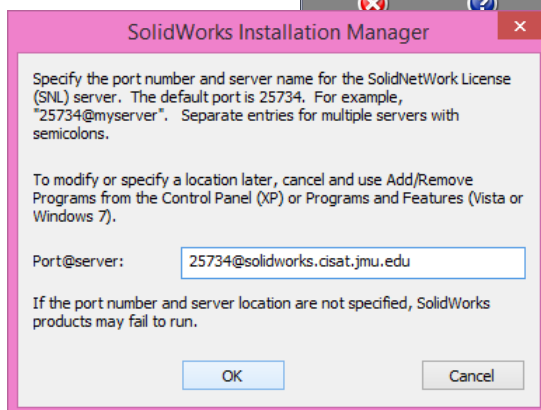
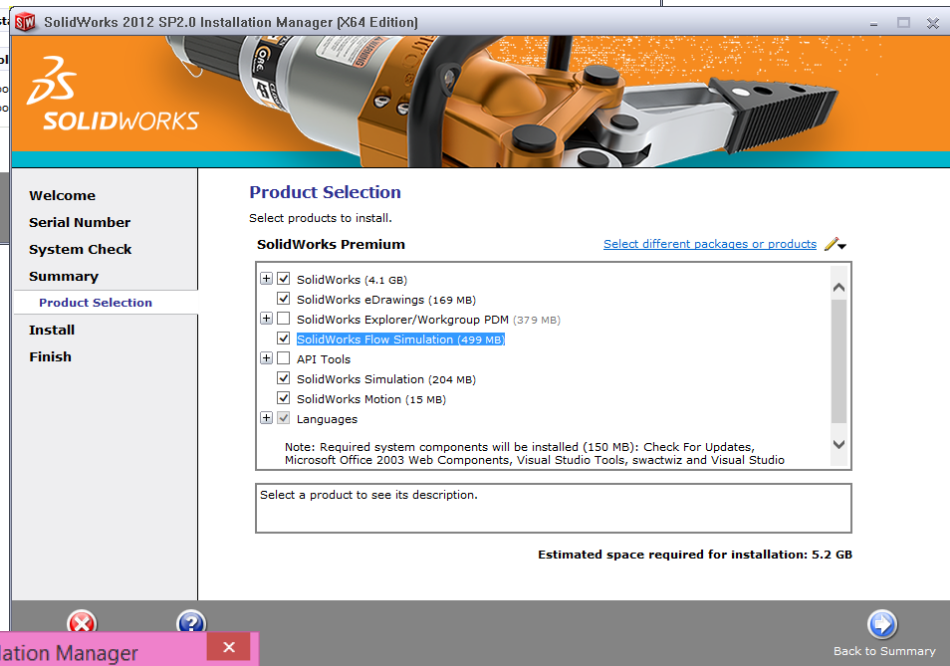
The SolidWorks install *should* automatically select the appropriate products to include. In some



instances, it will omit “SolidWorks Flow Simulation” or another product.

If any of the desired products are missing, please click the **Change** link above the product listing to edit the list.

Make sure the products shown in the image to the right are included as part of SolidWorks Premium. Once all desired products are listed, click the **[Install Now]** button to proceed.



You will be prompted to enter the license manager information. Enter 25734@solidworks.cisat.jmu.edu and click **[Ok]**. If you are prompted that this is not a valid license server, please double-check the number and spelling. If you are installing from off-campus, you will be unable to reach the license server – simply proceed for now. If you are on-campus, make sure the license manager is accepted before proceeding.

Installation will take between 20 and 40 minutes

depending upon your system. Please be patient – the progress bar may pause for quite some time during the install.

Once completed, uncheck the boxes and opt out of the SolidWorks Customer Experience Improvement Program, then click Finish.

Connecting to the License Server

SolidWorks 2012 is available to all JMU Engineering faculty, staff and students for educational purposes only. To satisfy the license agreement with SolidWorks, the license server is restricted to use within the JMU network and may only be reached by those affiliated with JMU via use of an eID.

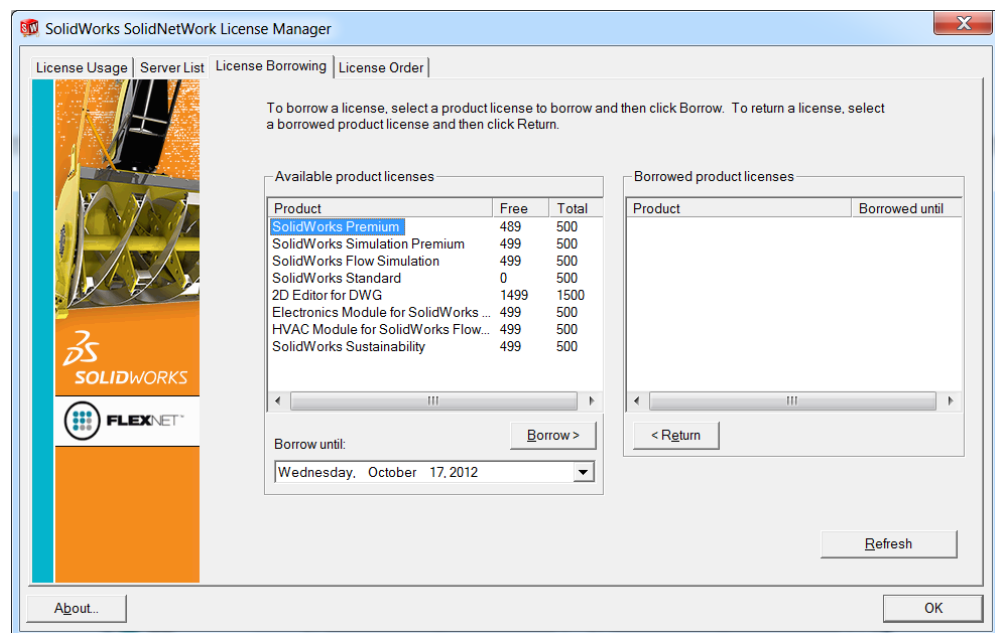
To access the license server from off campus, you will need to visit the [JMU SSL VPN](https://sslvpn.jmu.edu) and install the [Junos Pulse](#) client. The JMU SSL VPN can be reached at: <https://sslvpn.jmu.edu>. Further information on the SSL VPN is available at <http://www.jmu.edu/computing/sslvpn/sslvpnservices.shtml>.

License Borrowing

SolidWorks 2012 is configured to license through the network each time it runs. Your computer must be on the JMU network or connected via the JMU SSL VPN to be able to reach the license server. When opened, the software will temporarily use one of our available licenses until you close the software, checking back in periodically. If the network connection drops, however, your SolidWorks session will terminate within a matter of minutes.

To reserve a network license for a longer period of time, avoiding the need to use the SSL VPN and potential disconnect problems, you will need to *borrow* a license using the license manager utility. You can find this utility under the **Start** menu by typing “**License Manager**”, or browse to Start >> All Programs >> SolidWorks >> SolidWorks Tools >> **SolidNetWork License Manager**.

To borrow a license, visit the **License Borrowing** tab. Select **SolidWorks Premium** from the list of available products, choose a date no further than 30 days in the future, then click the [**Borrow >**] button, and verify the selection in the small dialog box that opens.



Once the borrow process completes, you should see SolidWorks Premium as well as SolidWorks Standard on the right pane along with the date at which the borrow period will end automatically. If you wish to return your license sooner, simply select **SolidWorks Premium** and click the [**< Return**] button.

Support

For further help in installing or licensing **SolidWorks**, please contact **Chrissy Willow Rothgeb** at ciselabopshelp@jmu.edu, or email her directly at rothgecw@jmu.edu.

For further help in installing or using the **SSL VPN**, please contact the **JMU Computing Help Desk**. The Help Desk can be reached at <http://www.jmu.edu/computing/helpdesk/>, by email at helpdesk@jmu.edu, or call (540) 568-3555 Monday through Friday, 8am through 5pm.