

# SolidWorks 2012 Network Install

---

*Installing SolidWorks 2012 via the Engineering File Server*

## Forward

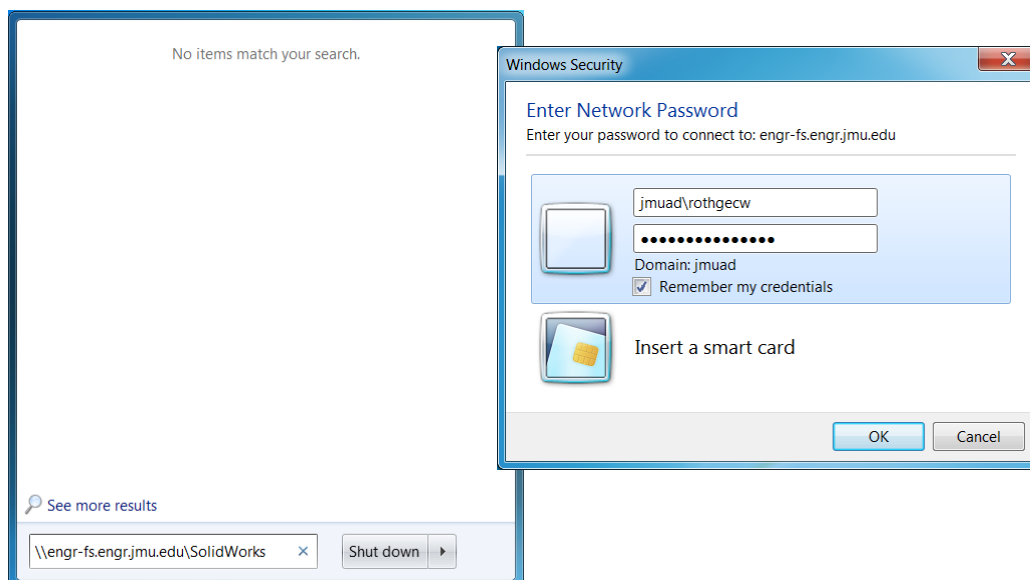
The JMU Engineering Department owns a limited site license for SolidWorks. As such, Engineering Faculty, Staff and Students are privy to the software for educational purposes only. Licensing is handled by a network license manager from which licenses may be used, or borrowed for longer periods of use. The installs for SolidWorks are available on the Engineering File Server. This document covers the process of connecting, installing and licensing SolidWorks.

## JMU Remote Access

If you are connecting from an off-campus location, you will first need to visit the [JMU SSL VPN](https://sslvpn.jmu.edu) and install [Network Connect](https://sslvpn.jmu.edu). The JMU SSL VPN can be reached at: <https://sslvpn.jmu.edu>. Further information on the SSL VPN is available at <http://www.jmu.edu/computing/sslvpn/sslvpnservices.shtml>.

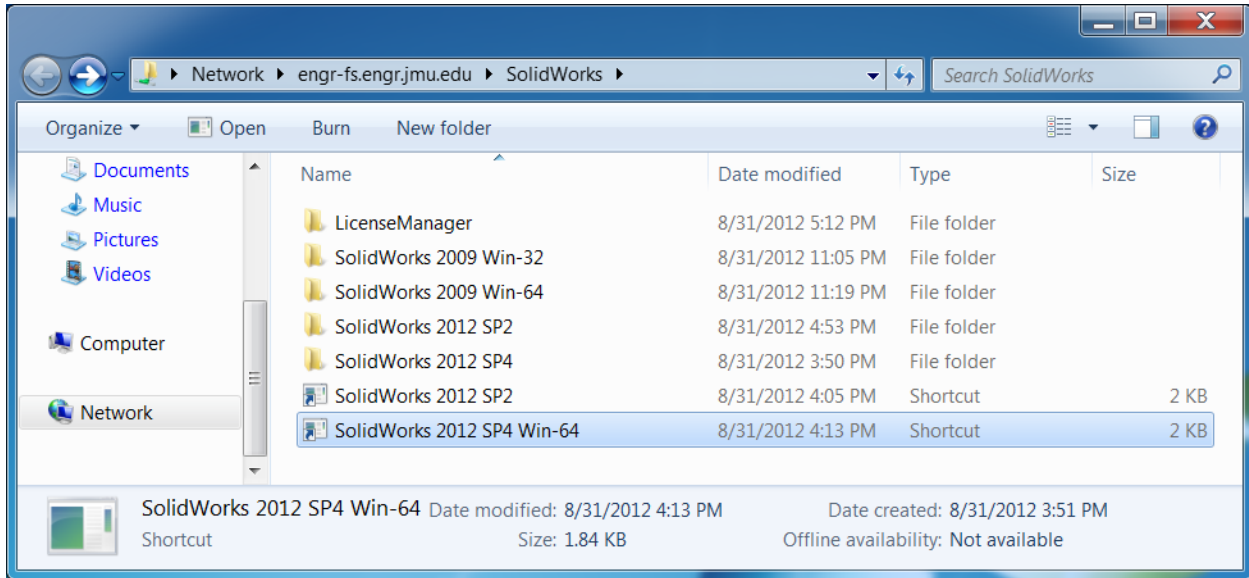
## Connecting to the Engineering File Server

The installation files for SolidWorks are available on the Engineering File Server. To reach the server, type [\\engr-fs.engr.jmu.edu\SolidWorks](https://sslvpn.jmu.edu) at the Start prompt. After a short wait, you will be asked to authenticate. Please provide your JMU eID (jmuad\eid) and password.



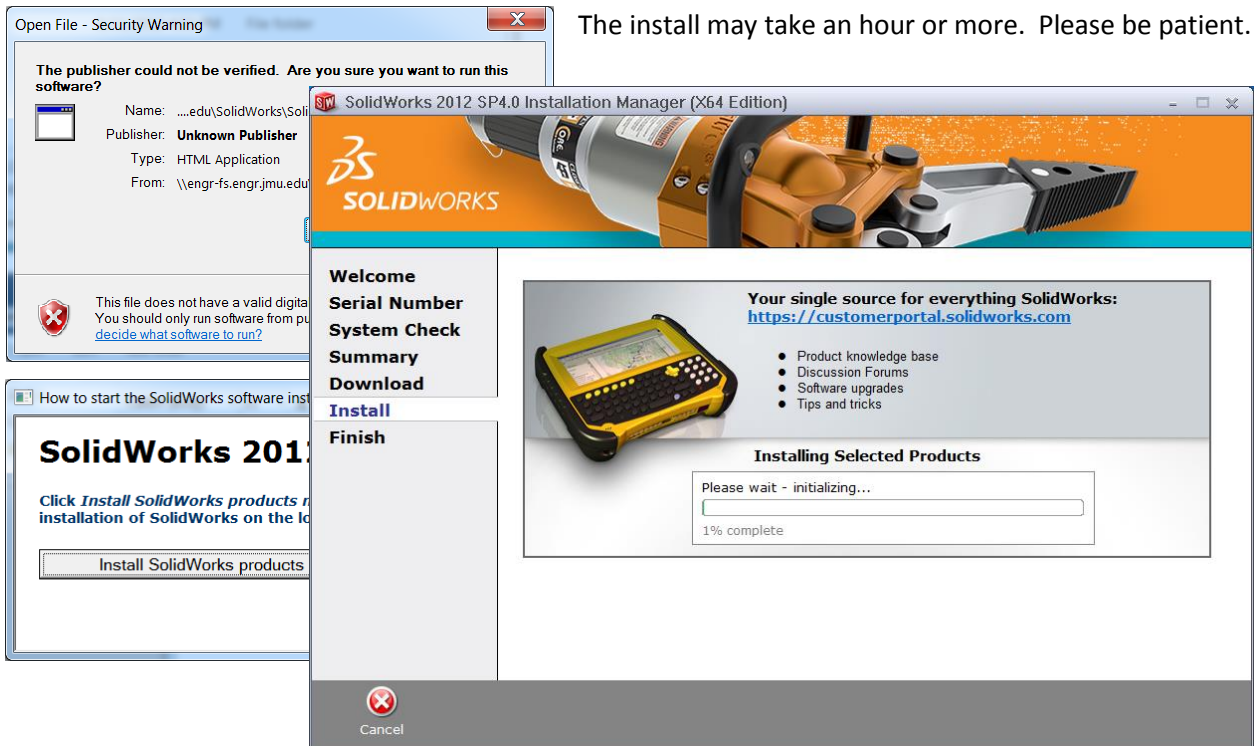
## Installing SolidWorks 2012

Once connected, a folder window should open to display the contents of the SolidWorks file share:



If you have a 64-bit OS, please use the shortcut for “SolidWorks 2012 SP4 Win-64” as highlighted above. If you have a 32-bit OS or are unsure as to which you have, use shortcut for “SolidWorks 2012 SP2”.

Either will prompt whether you indeed intend to install the network application, and then provide a button to initiate the unattended install. No additional configuration should be necessary.



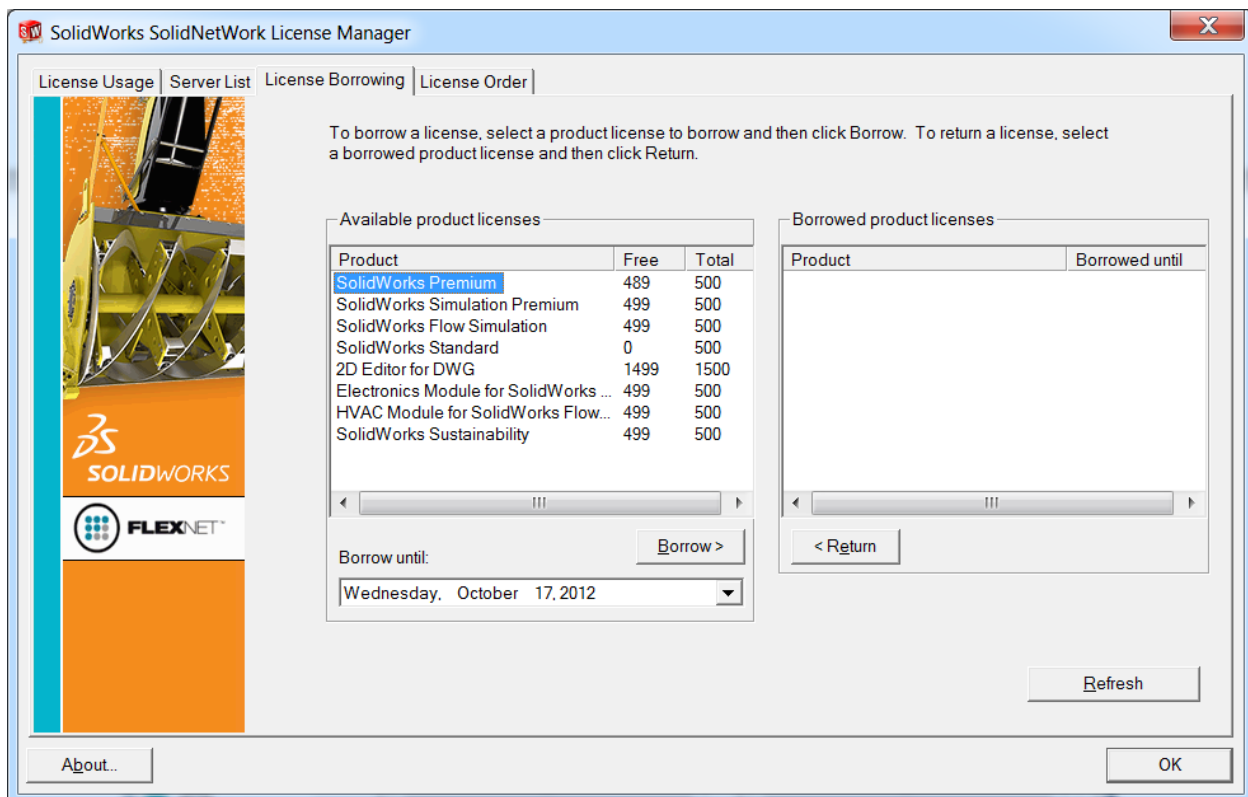
## License Borrowing

The unattended install for SolidWorks is configured to provide all necessary settings, including the path to the network license manager. Simply running the software will temporarily use one of the available licenses until you close the software. If the network connection drops, however, your SolidWorks session will terminate within a matter of minutes.

To reserve a network license for a longer period of time, avoiding the need to use the SSL VPN and potential disconnect problems, you will need to “borrow” a license using the license manager utility. You can find this utility under the Start menu by typing “License Manager”, or browse to Start >> All Programs >> SolidWorks >> SolidWorks Tools >> SolidNetWork License Manager.

Within the license manager utility, please visit the “Server List” tab and verify that the license manager has been specified as [25734@solidworks.cisat.jmu.edu](mailto:25734@solidworks.cisat.jmu.edu). If it is not, remove any invalid entries and add the correct.

To borrow a license, visit the “License Borrowing” tab. Select “SolidWorks Premium” from the list of available products, and then click the “Borrow >” button, and verify the selection in the small dialog box that opens.



Once the borrow process completes, you should see SolidWorks Premium as well as SolidWorks Standard on the right pane along with the date at which the borrow period will end automatically. If you wish to return your license sooner, simply select “SolidWorks Premium” and click the “< Return” button.

## Support

For further help in installing or licensing **SolidWorks**, please contact **Chrissy Willow Rothgeb** at [cislabopshelp@jmu.edu](mailto:cislabopshelp@jmu.edu), or email her directly at [rothgecw@jmu.edu](mailto:rothgecw@jmu.edu).

For further help in installing, using or questions regarding the **SSL VPN**, please contact the **JMU Computing Help Desk**. The Help Desk can be reached at <http://www.jmu.edu/computing/helpdesk/>, by email at [helpdesk@jmu.edu](mailto:helpdesk@jmu.edu), or call (540) 568-3555 Monday through Friday, 8am through 5pm.